

Important information**JPMorgan Sustainable Infrastructure Fund**

1. The Fund invests primarily (at least 70%) in equity securities globally (including listed real estate investment trusts ("REITs")) that are well positioned to promote the development of the infrastructure required to facilitate a sustainable and inclusive economy, whilst not significantly harming any environmental or social objectives and following good governance practices.
2. The Fund is therefore exposed to risks related to investment, equity, REITs, sustainable investing, infrastructure companies, its investment strategy (associated with concentration in a single theme and/or sub-theme; sub-themes and changing market trends; the use of big data research and artificial intelligence technique), concentration, emerging markets, small companies, currency, derivatives and class currency.
3. Where the income generated by the Fund is insufficient to pay a distribution as the Fund declares, the Manager may at its discretion determine such distributions may be paid from capital including realised and unrealised capital gains. Investors should note that the payment of distributions out of capital represents a return or withdrawal of part of the amount they originally invested or from any capital gains attributable to that original investment. Any payments of distributions by the Fund may result in an immediate decrease in the net asset value per unit. Also, a positive distribution yield does not imply a positive return on the total investment.
4. Investors may be subject to substantial losses.
5. Investors should not solely rely on this document to make any investment decision.



JPMorgan Sustainable Infrastructure Fund

An infrastructure portfolio
advancing a more sustainable future

Why consider **sustainable infrastructure**¹ ?



Strengthening environmental resilience amid climate change

We have become more aware of the economic impact and risks of climate change. Extreme weather patterns are also affecting our everyday life, including the supply and access of safe drinking water.

Key opportunities we see in companies

Electricity infrastructure:

electricity networks

Water infrastructure:

water networks & water treatments

Renewables infrastructure:

wind, hydropower & solar



Driving a social and inclusive economy amid changing demographics

Rising living standards, alongside a growing and ageing population, are driving demand and growth of quality healthcare, housing and education.

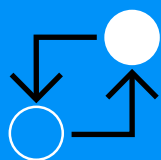
Key opportunities we see in companies

Healthcare infrastructure:

healthcare facilities & elderly care homes

Social housing & educational infrastructure:

affordable housing & student accommodation



Improving connectivity amid urbanisation

Increasing urbanisation is leading to greater demand for better services and connectivity in cities, presenting opportunities for sustainable infrastructure companies.

Key opportunities we see in companies

Digital infrastructure:

data storage & telecommunications tower operations

Transport infrastructure:

sustainable railway network

Sustainable logistics:

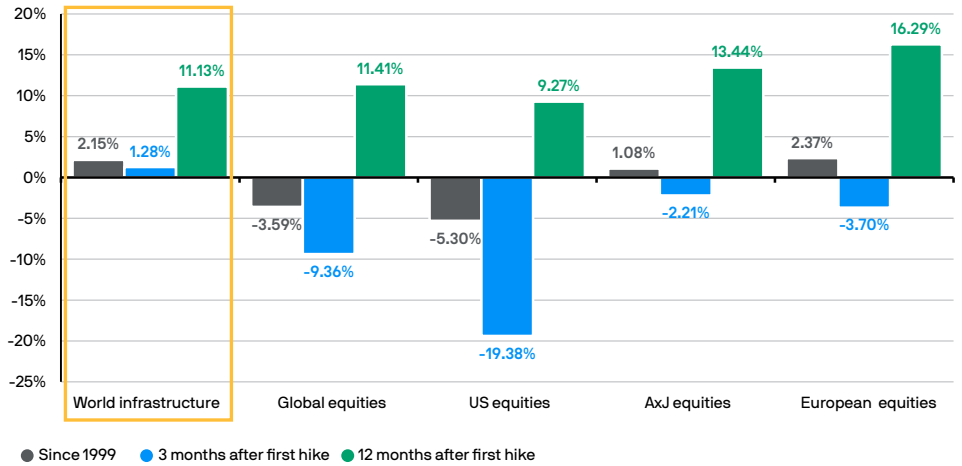
sustainable warehousing & sustainable transportation systems

Why sustainable infrastructure is a **unique** opportunity?

Navigating the rate-hike cycle

Historically, infrastructure stocks are among the top performers within equity sectors in rate-hike cycles². However, the share of infrastructure equities in global portfolios have remained low in general. For example, utilities and real estate account for about 6% of the MSCI World Index³. In our view, adding the infrastructure sector to a portfolio could help manage current elevated inflationary pressures.

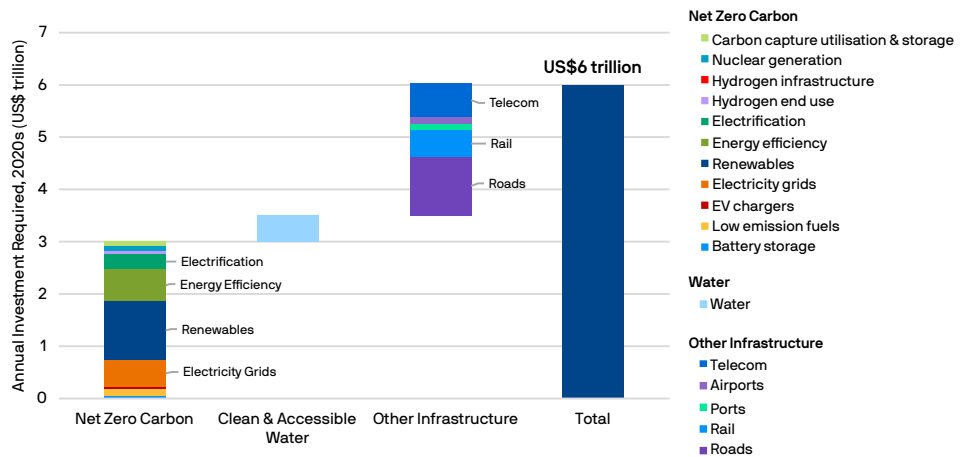
Average annualised local currency returns of risk assets during US hiking cycles



2. Source: Bloomberg, J.P. Morgan Asset Management. Data reflect most recently available as of 24.06.2022. Represented indices are: MSCI World Infrastructure Index (World infrastructure), MSCI AC World Index (Global equities), S&P 500 Index (US equities), MSCI AC Asia ex Japan Index (AxJ equities), MSCI Europe Index (European equities). World Infrastructure does not represent the performance of JPMorgan Sustainable Infrastructure Fund. "Since 1999" and "3 months after first hike" cover the 4 rate hike cycles of the US from 1999 to 2022 while "12 months after first hike" covers the 3 rate hike cycles of the US from 1999 to 2019. Indices do not include fees or operating expenses and are not available for actual investment. Past performance is not a reliable indicator of current and future results.

Capturing long-term growth opportunities

Investment demand in global infrastructure is on the rise, particularly, sustainable infrastructure. As illustrated below, an estimated US\$6 trillion of eco-conscious capital expenditure⁴ is needed annually to achieve net-zero emissions, infrastructure and clean water goals.



4. Source: IEA, OECD, McKinsey & Company, Goldman Sachs Global Investment Research Report, published in November 2021. Provided for information only to illustrate macro trends, not to be construed as offer, research or investment advice.

Why invest in the JPMorgan Sustainable Infrastructure Fund?



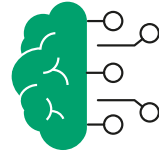
Essential assets driving the future

Seeking opportunities in eight key infrastructure investment areas across the globe, covering electricity, water, renewables, medical, social housing and education, digital, transport and sustainable logistics.



A high-conviction, sustainable portfolio

Selecting 50-100 global securities with growth potential. Such companies can promote infrastructure development required to drive a sustainable and inclusive economy.



An innovative strategy integrating proprietary artificial intelligence (AI)

Bringing together fundamental and sector-specific insights with expertise in artificial intelligence and data science to develop a portfolio that is designed by data, refined by research and strengthened by sustainability.

Available share classes⁵

- USD: quarterly distribution, monthly distribution, accumulative
- HKD: monthly distribution, accumulative
- RMB (Hedged): monthly distribution

Driving sustainable investing forward with J.P. Morgan Asset Management

The Sustainable Infrastructure strategy is jointly managed by JPMAM's International Equity Group and the Quantitative Solutions Team bringing together fundamental and sector-specific insights with expertise in artificial intelligence and data science. We also rely on insights and stewardship from J.P. Morgan Asset Management's dedicated Sustainable Investing Team.



Best Climate Change Strategy

InsuranceAsia News Institutional Asset Management Awards 2022⁶



Fund House of the Year – Hong Kong

AsianInvestor Asset Management Awards 2022⁷
Honoured for the 3rd straight year

1. For illustrative purposes only based on current market conditions, subject to change from time to time. Not all investments are suitable for all investors. Exact allocation of portfolio depends on each individual's circumstance and market conditions.
3. Source: MSCI, data as of 31.05.2022.
5. Aim at monthly/quarterly distribution. Dividend rate is not guaranteed. Distributions may be paid from capital. Refer to important information 3
6. InsuranceAsia News Institutional Asset Management Awards 2022 are issued by InsuranceAsia News in the year specified, reflecting product performance, business performance, service competency, branding and marketing as at the previous calendar year end.
7. AsianInvestor Asset Management Awards are issued by AsianInvestor in the year specified, reflecting performance of previous calendar year.

Provided for information only based on market conditions as of date of publication, not to be construed as investment recommendation or advice. Forecasts, projections and other forward looking statements are based upon current beliefs and expectations, may or may not come to pass. They are for illustrative purposes only and serve as an indication of what may occur. Given the inherent uncertainties and risks associated with forecast, projections or other forward statements, actual events, results or performance may differ materially from those reflected or contemplated.

Investments involve risks. This includes illustrations of macro trends which may or may not come to pass. Investors should seek professional advice before investing. Please refer to the fund's offering documents for further details on its objectives. The manager seeks to achieve its stated objectives and there is no guarantee they will be met.

Diversification does not guarantee investment return and does not eliminate the risk of loss.

Unless stated otherwise, all information is sourced from J.P. Morgan Asset Management, as of end-June 2022. The information contained in this document does not constitute investment advice, or an offer to sell, or a solicitation of an offer to buy any security, investment product or service. Informational sources are considered reliable but you should conduct your own verification of information contained herein.

Investment involves risk. Past performance is not indicative of future performance. Please refer to the offering document(s) for details, including the risk factors. This document has not been reviewed by the SFC. Issued by JPMorgan Funds (Asia) Limited.



am.jpmorgan.com/hk/en/si