

JPMorgan US Growth Active ETF

Ticker: JGRO

A style-pure large cap growth solution that leverages the best of J.P. Morgan’s growth platform.
An actively managed transparent ETF, JGRO combines two time-tested, bottom-up fundamental approaches seeking underappreciated growth opportunities.

Expertise

- Experienced portfolio management team with an average of 29 years of industry experience supported by a dedicated growth team averaging 19 years of industry experience.

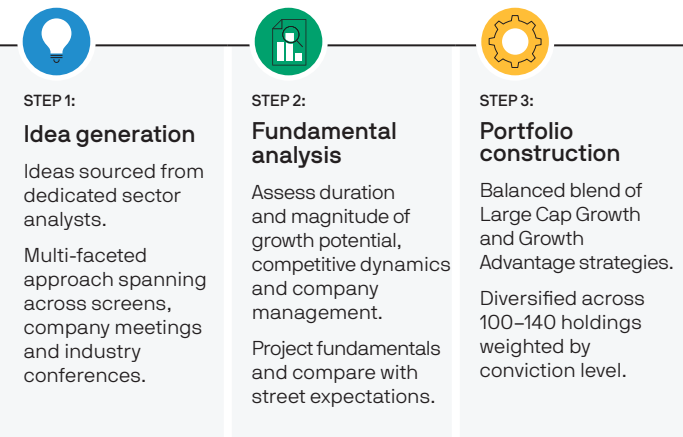
Portfolio

- Actively managed investment strategy that seeks to outperform the Russell 1000 Growth over a market cycle.
- Employs a fundamental, bottom-up approach to identify companies with underappreciated growth potential.
- Anchored in large cap with a degree of market capitalization flexibility.

Seeks to deliver:

- a pure growth equity portfolio
- long term -capital appreciation through a portfolio of primarily US large and mid-capitalization companies.Seeks to deliver

A collaborative, disciplined and repeatable process



Shown for illustrative purposes only. The manager seeks to achieve the stated objectives. There can be no guarantee the objectives will be met.

A fundamental approach that seeks underappreciated growth opportunities

Two time-tested strategies – Large Cap Growth and Growth Advantage – are blended together to seek to deliver a true growth experience and broaden the opportunity set. JGRO benefits from the ability to selectively invest in emerging growth companies further down the capitalization spectrum.

The manager seeks to achieve the stated objectives. There can be no guarantee the objectives will be met.

Large cap growth

A persistent bias towards momentum

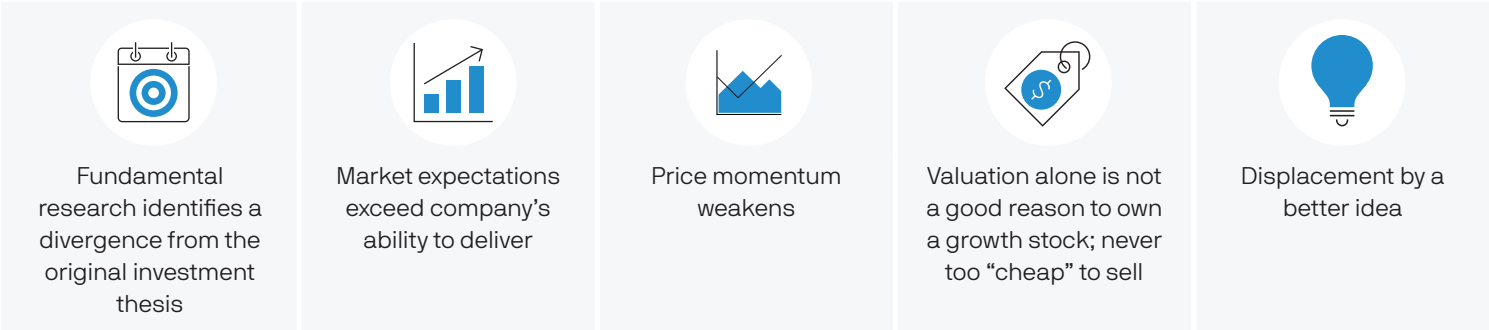
We focus on companies with:

- Large and/or growing addressable markets
- Sustainable competitive advantages
- Strong management and execution

Growth advantage

Anchored in large cap with a degree of flexibility

Our sell discipline is the opposite of our buy discipline



Shown for illustrative purposes only. The manager seeks to achieve the stated objectives. There can be no guarantee the objectives will be met.

Portfolio Management Team



Giri Devulapally

- 33 years of industry experience
- 22 years at J.P.Morgan



Felise Agranoff

- 21 years of industry experience, all at J.P.Morgan

The fund leverages:

- Experienced portfolio management team supported by a dedicated team of growth analysts.
- The insights of the J.P. Morgan equity organization which includes over 40 research analysts in the U.S. and over 200 globally.

Fee schedule

Share class: ETF (JGRO)

Expense cap: 0.44%

Commissions, trailing commissions, management fees and expenses all may be associated with ETF investments. Important information about the JPMorgan ETFs, including investment objectives and strategies, and applicable management fees, performance fees (if any), and other charges, is contained in their respective prospectus. Please read the prospectus carefully before investing.

Important information about JPMorgan ETFs, including investment objectives and strategies, and applicable management fees, performance fees (if any), and other charges, is contained in their respective prospectus. Please read the prospectus carefully before investing.

The JPMorgan ETFs here are not being offered in the United States by way of this website and may only be offered in the United States or U.S. person pursuant to applicable laws.

This communication is for informational purposes only. It is not intended as investment, financial or other advice. The information included in this communication is not an offer to sell. While the information and material in this communication is believed to be accurate at the time its prepared, J.P. Morgan Asset Management (Canada), Inc. (and its affiliates, subsidiaries, or sub-advisors) cannot give any assurance that it is accurate, complete, or current at all times.

Risk Summary

The price of equity securities may fluctuate rapidly or unpredictably due to factors affecting individual companies, as well as changes in economic or political conditions. These price movements may result in loss of your investment.

Indexes

The Russell 1000® Value Index measures the performance of the large cap value segment of the US equity universe. It includes those Russell 1000 companies with relatively lower price-to-book ratios, lower I/B/E/S forecast medium term (2 year) growth and lower sales per share historical growth (5 years).

Entities

This communication is issued in Canada, by JPMorgan Asset Management (Canada) Inc., which is a registered Portfolio Manager and Exempt Market Dealer in all Canadian provinces and territories except the Yukon, an Investment Fund Manager in British Columbia, Ontario, Quebec, and Newfoundland and Labrador, and a derivatives adviser in Ontario and Quebec.

J.P. Morgan Asset Management is the brand name for the asset management business of JPMorgan Chase & Co and its affiliates worldwide.

©JPMorgan Chase & Co., March 2025

b331e1d1-0011-11f0-958d-db9299b24400