

## WILL DEBT BE A DRAG?

# Dealing with the upward drift in government debt

**Karen Ward**, *Chief Market Strategist for EMEA, Global Market Insights Strategy*

**Benjamin Mandel, Ph.D.**, *Global Strategist, Multi-Asset Solutions*

## IN BRIEF

- Developed economy governments appear generally reluctant, or simply unwilling, to tackle the large stock of public debt that accumulated during the global financial crisis.
- We examine successful public debt consolidations since the 1950s, separating out the contributions made by financial conditions (interest rates vs. growth) from active fiscal policy (i.e., raising the budget balance).
- Recent case studies underscore that favorable monetary policy and a positive growth backdrop are important for debt consolidation. Government belt-tightening is also a common feature.
- Debt consolidation is not a foregone conclusion. But if it does occur in the coming decades, given fiscal spending constraints, it will be likelier for economies with a more favorable mix of interest rates relative to growth, or a tailwind from currency depreciation.
- We view any debt consolidation over the next 10 to 15 years as a mild downside risk to our interest rate projections. Extreme political pressure on central banks to keep rates low so as to keep debt growth in check could pose a challenge to central bank independence.

## WHAT DO SUCCESSFUL DEBT ADJUSTMENTS LOOK LIKE?

The U.S. is currently deploying a significant and unfunded tax cut. Voters in Europe are demonstrating austerity fatigue. And Japan is still kicking the can down the road. Clearly, developed market (DM) governments are generally reluctant, or simply unwilling, to tackle the large stock of public debt accumulated during the global financial crisis (GFC). We document this drift in government priorities and then ask: What would a successful debt consolidation look like?

What are the key characteristics of adjustment paths, in which government debt stabilizes and then falls from high levels in an environment of relatively strong growth? History suggests the following ingredients, which fit into the common framework for thinking about debt sustainability:

1. Loose monetary conditions – a falling and sometimes artificially constrained real interest rate (e.g., the U.S. post-World War II)
2. Targeted fiscal policy, including cuts to entitlements that in some cases promoted labor force participation (e.g., Belgium and Canada in the 1990s)

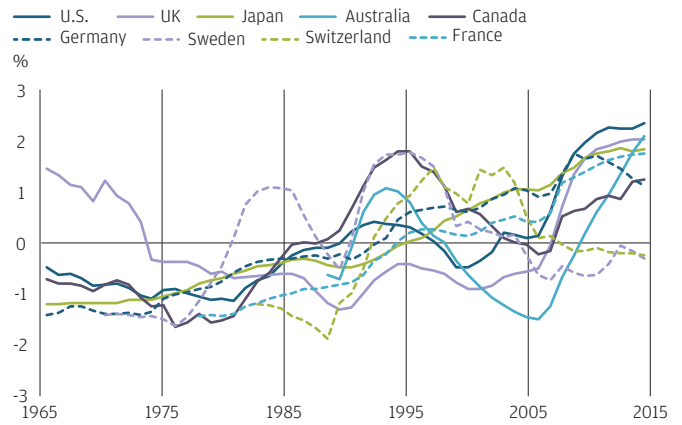
We discuss the likelihood of either of these in the context of our long-term macroeconomic and market expectations. We build a case that much of the burden of debt consolidation in the coming decades will fall on the central banks, in the form of pressure to maintain loose monetary conditions. Economies with a more favorable balance between interest rates and growth, or those experiencing a tailwind from currency depreciation, have the highest odds of successfully consolidating debt. We view this potential future pressure on central banks as a mild downside risk to our rates projections and, in its extreme form, as a possible challenge to central bank independence.

### Documenting debt drift

Our empirical starting point is the observation that general government debt, as a share of GDP in developed market economies, has continued a long-term upward trajectory – what we’re calling debt drift. The buildup in debt that took place during the global financial crisis has not been unwound (**Exhibit 1**). Below the surface of this trend, debt levels in the U.S., UK, France, Australia and Canada have continued rising in recent years; levels in Japan have remained relatively stable; and in Germany debt has fallen steadily. Sweden and Switzerland did not undertake significant buildups in debt during the financial crisis period, and their debt remains near levels of the mid 2000s.

### Debt continues to drift upward in most DM economies

**EXHIBIT 1: TRAJECTORY OF DEBT AS % OF GDP, STANDARDIZED**



Source: IMF Fiscal Monitor, J.P. Morgan Asset Management; data as of August 2018.

Exhibit 1 also highlights the extent to which higher levels of government debt today are part of a longer-term, secular trend of rising debt. DM country debt levels in the 1960s and 1970s (with the exception of the UK) were roughly one standard deviation below their long-run averages for the 50 years between 1965 and 2015. This is an important qualifier for our results. Sustainable levels of debt may have increased in recent decades, and periods of relatively high debt may persist for some time.

Having documented the rise in debt, it is helpful to disentangle its underlying drivers. To do so, we follow an accounting framework that parses changes in the debt-to-GDP ratio, separating out contributions from the real interest rate, real GDP growth and the government’s primary balance (the fiscal balance excluding interest payments) (**Exhibit 2**). The primary balance contains a cyclical component, reflecting how government finances deteriorate during periods of economic contraction and improve during expansions, and a structural component that more reflects the role of policy.

### Debt is reduced when the real interest rate is below GDP growth or when policy tightens

**EXHIBIT 2: GOVERNMENT DEBT ACCOUNTING FORMULA**



Source: J.P. Morgan Asset Management; as of October 2018.

During the recent years of debt drift, looser fiscal policy played an overwhelming role. We know this because other factors leaned against it. For one, the balance of real interest rates and growth has generally been exerting downward pressure on debt levels. We estimate that from 2010-17 the fact that growth rates were higher than prevailing interest rates subtracted an average of 1.2 percentage points (ppt) annually from debt-to-GDP levels in each country (Exhibit 3). The cyclical aspect of the primary surplus added slightly to debt over this period as a whole (0.4ppt), but it has swung to become a force for debt reduction in recent years, particularly in the U.S., Germany, Canada and Sweden. In stark contrast, since 2010 the policy component of the primary balance has added 1.3ppt to debt levels annually, on average, for each country. All in all, monetary, growth and cyclical conditions have been generally favorable for debt consolidation, but both have been overwhelmed by sustained shifts in fiscal policy.

**During recent years of debt drift, looser fiscal policy played an overwhelming role**

**EXHIBIT 3: DRIVERS OF CHANGE IN DEBT-TO-GDP RATIO**

Debt/GDP drivers (2000-17)	Impact on debt-to-GDP (avg, annual, per country)
Growth rates higher than interest rates	-1.2ppt
Cyclical component of primary balance	+0.4ppt
Policy component of primary balance	+1.3ppt

Source: IMF Fiscal Monitor, J.P. Morgan Asset Management; data as of August 31, 2018.

**Will large amounts of debt today restrain growth in the future?**

It seems natural to conclude that government debt will necessarily restrain future growth – that lower taxes today will mean higher taxes in the future to ensure that debt is repaid – so that growth today comes at the expense of growth tomorrow. But history tells us this is not necessarily the case. In a number of instances in the past, high debt levels were tackled without significantly impeding growth.<sup>1</sup>

We use the deconstruction of debt-to-GDP ratios discussed above to characterize these successful consolidations going back to the 1950s. By doing so, we are able to separate the contributions of financial conditions (i.e., rates vs. growth) from those of policy (i.e., primary surplus) in pushing down debt levels (Exhibit 4). Notably, of the 14 successful debt consolidations that we identify, 13 occurred during periods of relatively tight fiscal policy (high primary surpluses), suggesting that at least some belt-tightening is necessary. The number of consolidation experiences that took place amid relatively low vs. relatively high rates is evenly split, implying a significant – but not necessary – role for low rates relative to growth. To shed light on the mechanics of consolidation, we describe selected cases from the lower two quadrants in Exhibit 3 (see Addendum, Exhibit 8 for information on all 14 cases).

<sup>1</sup> The evidence for debt’s feedback into future growth is mixed and fraught with difficulties in identifying whether or not the relationship is a causal one. This paper considers the narrower but more cleanly defined episodes of successful consolidation. Given the focus on DM economies, debt crises and their effects on growth and markets are outside the scope of the paper.

**Policy tightening or favorable financial conditions are necessary – sometimes both**

**EXHIBIT 4: SUCCESSFUL CASES OF DEBT CONSOLIDATION AND THEIR ECONOMIC AND POLICY ENVIRONMENTS**

		Neutral/high interest rates vs. growth	Low rates vs. growth
Less	↑ Neutral policy		Switzerland (1999-2007)
More	↓ Tight policy	Sweden (1985-90) Belgium (1994-2007) U.S. (1994-2001) Australia (1995-2007) UK (1996-2001) Canada (1997-2007) Japan (2006-07)	U.S. (1955-69) Canada (1962-69) Japan (1988-91) UK (1987-90) Sweden (1997-2008) Germany (2012-17)

Source: IMF Fiscal Monitor, Haver Analytics, J.P. Morgan Asset Management; data as of August 2018.

### Tight policy/low interest rates vs. growth: The U.S.

The U.S. experience post-World War II is one of the most dramatic examples of debt consolidation. In 1946, government debt was 120% of GDP and the primary balance was a deficit equal to about 5% of GDP. Then, in the following few years, the primary balance swung dramatically into a surplus of more than 6%. The primary balance remained in surplus throughout much of the 1950s and 1960s; by 1969, government debt was down to 46% of GDP. Over this postwar period, monetary conditions were kept artificially loose, with Washington propping up government bond prices, continuing a policy put in place during the war. This prevented the Federal Reserve (Fed) from raising interest rates. Instead, the Fed attempted to curb excess credit growth through lending constraints. This had only limited success, and inflation spiked as economic recovery took hold. While it lasted, though, robust nominal activity combined with low interest payments contributed to the substantial fall in government debt.

### Tight policy/neutral or high interest rates vs. growth: Belgium

Belgium experienced an expansion in government debt, to more than 100% of GDP, in the 1980s. In the years that followed, the Belgian government embarked on a tough deficit reduction plan that focused on reducing government spending. Public employment was scaled back, as was the generosity of the welfare state. Unemployment benefits were reduced, the retirement age was increased and, eventually, the cuts stretched to pension and health care costs. These efforts saw the primary balance swing by more than 11ppt into a primary surplus, where it remained for much of the next two decades. Despite the significant fiscal tightening, the debt-to-GDP ratio remained elevated as the economy struggled to cope with the combination of fiscal contraction and very tight monetary policy. It was only when monetary conditions eased in the mid 1990s that the fiscal efforts paid off and debt began falling.

By the mid-1990s, many other developed market nations were also focused on reducing the government debt accumulated during the early 1990s global recession. But for many, the debt problem was relatively short-lived. By the turn of the millennium, many countries – including Canada, the UK, Australia and Sweden – had managed to successfully change course and debt-to-GDP was falling.

This often involved a concerted fiscal effort, as in Belgium. The Canadian government directed its efforts to reducing public spending in difficult areas such as unemployment insurance, pensions and provincial government payments. This helped a primary deficit swing back into surplus. Other G7 countries, including the UK and Italy, saw similar improvements in their fiscal position, again after some tough political choices that reduced entitlements.

What all these fiscal consolidations had in common was a marked reduction in government spending on interest payments, reflecting the secular trend of falling bond yields. The shift toward independent central banks – mandated to deliver low inflation – coincided with a steady fall in bond yields through the 1990s, and both go a long way toward explaining the global growth performance and subsequent fiscal consolidation over that decade. We also note the possibility that falling bond yields likely increased the level of debt that economies could sustainably carry during the period that we examined.

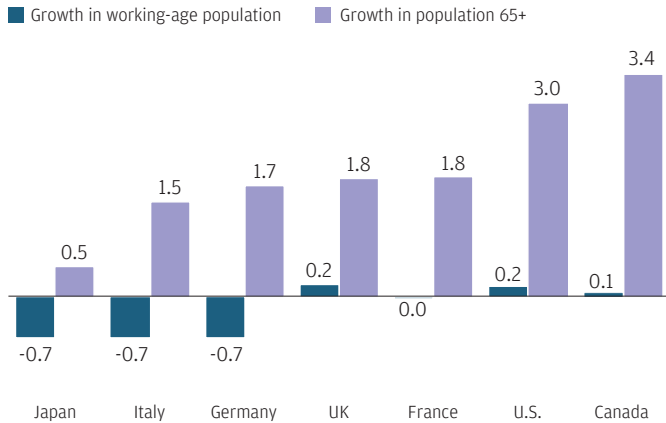
Considering these case studies, it appears possible for a government's debt burden to come down in a manner not detrimental to growth. The U.S. success relied on a good dose of unexpected inflation, but the other examples of debt consolidation have two things in common. First, governments made difficult political choices to reduce entitlements and bring down their spending. In many instances, because these changes increased workforce participation, they improved the supply side of the economy. Second, and perhaps more importantly, tight fiscal policy was accompanied by relatively low rates, which promoted demand to compensate for the reduction in public spending.

### What are the chances of successful DM debt consolidation in the coming decades?

We conclude with a rough assessment of DM economies' ability to replicate the successful consolidation experiences of the past and, where it is likely that they can, what conditions would be necessary. To begin, the ability of the governments in the developed world to improve their primary balance position looks challenging on a number of fronts. The most acute challenge is the demographic shift set to take place in the coming decades. While the severity of the problem differs by country, all countries in the developed world are seeing a slowing rate of growth of their working-age populations and a rapid expansion of those of pensionable age (**Exhibit 5**).

A ubiquitous, though uneven, rotation in entitlement spending

**EXHIBIT 5: DEMOGRAPHIC TRANSITION IN DEVELOPED MARKETS (% , AVERAGE ANNUALIZED GROWTH, 2018-28)**



Source: United Nations Department of Economic and Social Affairs, J.P. Morgan Asset Management; data as of July 31, 2018.

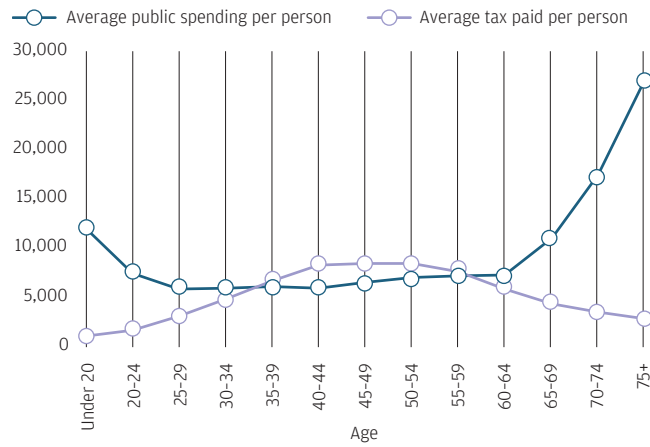
This demographic shift will have a material impact on public finances. **Exhibit 6** shows how tax payment and public spending vary by age in the UK. Tax contributions peak at around 50 years of age and then slow dramatically from the mid 60s, at which point many people no longer pay income tax (note that governments also receive taxes to fund spending from other sources, including corporations). By contrast, government spending per person increases substantially from age 70 as the provision of health and social care ramps up. Given that around half of those eligible to vote in the developed world are older than 50, governments are likely to find reducing pension and health care benefits politically challenging.

Further reducing benefits currently granted to the working population seems similarly challenging. Income growth for middle and lower income households has been very meager in this recovery in much of the developed world. This has contributed to the recent spate of populist pressures and the backlash against migration and globalization. If anything, the trend may be for some governments to increase support for low income households through guarantees of a minimum income, as was recently proposed in Italy.

While there are multiple structural downside risks to DM public finances, it is harder to identify upside risks. Perhaps in the near term a recovery in productivity is possible, which would raise GDP and, in turn, government revenues – though productivity has been lacking through much of this recovery and it is difficult to rely on a phenomenon whose drivers are little understood.

Government spending ramps up dramatically over the life cycle

**EXHIBIT 6: DEMOGRAPHIC DRIVERS OF GOVERNMENT SPENDING AND TAXES IN THE UK (GBP)**

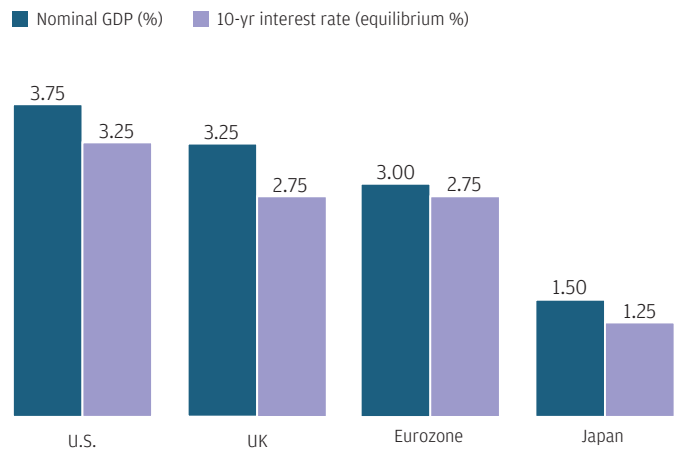


Source: Office for Budget Responsibility, Her Majesty's Revenue and Customs (HMRC), J.P. Morgan Asset Management; data as of July 31, 2018.

Finally, we note that in our 2019 baseline Long-Term Capital Market Assumptions (LTCMAs) macroeconomic assumptions – which link nominal GDP and interest rates as a matter of methodology – we do not anticipate a significant tailwind from financial conditions. In other words, we do not pencil in large imbalances between growth and interest rates (**Exhibit 7**). Should the next recession cause liquidity-trap dynamics like the post-GFC period's, leading to a sustained period when rates are lower than growth, we see little potential upside from the perspective of public debt consolidation. Such a dynamic would likely be accompanied by either a deep recession (requiring a big fiscal response) or by pressure on fiscal authorities to make up for less-effective monetary policy.

Big imbalances are not in our baseline projections

**EXHIBIT 7: LTCMA ASSUMPTIONS FOR NOMINAL 10-YEAR RATES MINUS NOMINAL GDP GROWTH**



Source: J.P. Morgan Asset Management; data as of October 2018.

## CONCLUSION

The picture we've painted presents something of a quandary for DM economies, where debt is drifting higher but neither belt-tightening nor outsize contributions from financial conditions would be sufficient to cap it. Achieving the required primary fiscal surplus looks incredibly challenging in the developed world, given an aging electorate that will defend its entitlements at the ballot box. Globalization and automation, and the resulting social challenges, may also make it hard to reduce the generosity of the welfare state. Boosting trend growth using fiscal policy is difficult and has yielded a mixed bag of results in the past.

This leads us to our conclusion that if debt consolidation is going to happen in the coming decades, the bulk of the burden will need to be shouldered by monetary conditions, and we expect this would encompass both implicit and explicit pressure on central banks to provide the solution. In theory,

monetary policy should remain independent, focused on the objective of containing inflation (and sustaining employment, in some cases). The reality, however, might prove trickier. Any efforts to rein in primary balances will reduce short-term growth and lead central banks to adopt more accommodative monetary policy stances – and political pressure to keep rates low cannot be ruled out. Currency trends will redistribute demand in a way that creates winners and losers vis-à-vis public debt consolidation.

In our baseline LTCMA macroeconomic assumptions for DM economies, public debt burdens do not feed back unduly into growth or inflation projections, or our expectations for monetary policy outcomes. Indeed, the trend toward higher debt burdens may well be borne for some time. But in time, efforts to consolidate debt are likely to present downside risk to interest rate projections, growth or both.

### Addendum

#### EXHIBIT 8: SUCCESSFUL CONSOLIDATIONS

Debt/GDP drivers (2000-17)	(Debt/GDP) <sub>t-1</sub>	Δ(Debt/GDP)	g	r	r-g	r-g (vs. all t)	PS (cyclical)	PS (structural)	PS (vs. all t)	ΔBroad FX
U.S. (1955-69)	73	-1.8	4.2%	2.2%	-2.0%	-1.3%				
Canada (1962-69)	68	-1.6	5.7%	5.0%	-0.7%	-2.4%				
UK (1987-90)	40	-3.2	3.6%	3.3%	-0.2%	-0.1%	1.7	-1.4	0.6	2.2%
Japan (1988-91)	77	-3.4	5.0%	3.2%	-1.8%	-1.5%				4.7%
Sweden (1985-90)	61	-3.5	2.4%	5.4%	3.1%	2.1%				1.4%
Switzerland (1984-89)	34	-1.1	3.0%	1.9%	-1.1%	0.3%				3.7%
U.S. (1994-2001)	70	-2.1	3.7%	3.5%	-0.2%	0.5%	0.8	0.9	5.0	5.5%
UK (1996-2001)	43	-1.5	3.3%	4.3%	1.1%	1.2%	-0.5	1.8	4.1	4.7%
Australia (1995-2007)	32	-1.7	3.6%	3.6%	-0.1%	0.3%	-0.2	1.3	2.1	1.5%
Canada (1997-2007)	101	-3.1	3.3%	4.6%	1.3%	-0.4%	0.2	3.2	3.1	2.5%
Sweden (1997-2008)	69	-2.7	3.1%	3.0%	-0.1%	-1.1%	1.5	1.0	1.6	-0.2%
Switzerland (1999-2007)	60	-1.4	2.4%	0.4%	-2.0%	-0.6%	0.0	0.5	-0.1	0.7%
Belgium (1994-2007)	134	-3.4	2.5%	3.2%	0.8%	0.7%	-0.1	4.5	2.9	2.8%
Japan (2006-07)	177	-0.7	1.5%	1.0%	-0.5%	-0.3%	0.4	-3.2	2.6	-6.3%
Germany (2012-17)	81	-2.1	1.7%	-0.5%	-2.2%	-3.1%	0.1	1.7	1.3	-0.2%

Source: IMF Fiscal Monitor, Haver Analytics, J.P. Morgan Asset Management; data as of August 2018.

PS: primary surplus; g: real GDP growth; r: real interest rate.



## PORTFOLIO INSIGHTS



LET'S SOLVE IT.®

**NOT FOR RETAIL DISTRIBUTION:** This communication has been prepared exclusively for institutional/wholesale/professional clients and qualified investors only as defined by local laws and regulations.

**JPMAM Long-Term Capital Market Assumptions:** Given the complex risk-reward trade-offs involved, we advise clients to rely on judgment as well as quantitative optimization approaches in setting strategic allocations. Please note that all information shown is based on qualitative analysis. Exclusive reliance on the above is not advised. This information is not intended as a recommendation to invest in any particular asset class or strategy or as a promise of future performance. Note that these asset class and strategy assumptions are passive only - they do not consider the impact of active management. References to future returns are not promises or even estimates of actual returns a client portfolio may achieve. Assumptions, opinions and estimates are provided for illustrative purposes only. They should not be relied upon as recommendations to buy or sell securities. Forecasts of financial market trends that are based on current market conditions constitute our judgment and are subject to change without notice. We believe the information provided here is reliable, but do not warrant its accuracy or completeness. This material has been prepared for information purposes only and is not intended to provide, and should not be relied on for, accounting, legal or tax advice. The outputs of the assumptions are provided for illustration/discussion purposes only and are subject to significant limitations. "Expected" or "alpha" return estimates are subject to uncertainty and error. For example, changes in the historical data from which it is estimated will result in different implications for asset class returns. Expected returns for each asset class are conditional on an economic scenario; actual returns in the event the scenario comes to pass could be higher or lower, as they have been in the past, so an investor should not expect to achieve returns similar to the outputs shown herein. References to future returns for either asset allocation strategies or asset classes are not promises of actual returns a client portfolio may achieve. Because of the inherent limitations of all models, potential investors should not rely exclusively on the model when making a decision. The model cannot account for the impact that economic, market, and other factors may have on the implementation and ongoing management of an actual investment portfolio. Unlike actual portfolio outcomes, the model outcomes do not reflect actual trading, liquidity constraints, fees, expenses, taxes and other factors that could impact the future returns. The model assumptions are passive only - they do not consider the impact of active management. A manager's ability to achieve similar outcomes is subject to risk factors over which the manager may have no or limited control. The views contained herein are not to be taken as advice or a recommendation to buy or sell any investment in any jurisdiction, nor is it a commitment from J.P. Morgan Asset Management or any of its subsidiaries to participate in any of the transactions mentioned herein. Any forecasts, figures, opinions or investment techniques and strategies set out are for information purposes only, based on certain assumptions and current market conditions and are subject to change without prior notice. All information presented herein is considered to be accurate at the time of production. This material does not contain sufficient information to support an investment decision and it should not be relied upon by you in evaluating the merits of investing in any securities or products. In addition, users should make an independent assessment of the legal, regulatory, tax, credit and accounting implications and determine, together with their own professional advisers, if any investment mentioned herein is believed to be suitable to their personal goals. Investors should ensure that they obtain all available relevant information before making any investment. It should be noted that investment involves risks, the value of investments and the income from them may fluctuate in accordance with market conditions and taxation agreements and investors may not get back the full amount invested. Both past performance and yield are not a reliable indicator of current and future results.

For the purposes of MiFIDII, the JPM Market Insights and Portfolio Insights programs are marketing communications and are not in scope for any MiFIDII/MiFIR requirements specifically related to investment research. Furthermore, the J.P. Morgan Asset Management Market Insights and Portfolio Insights programs, as non-independent research, have not been prepared in accordance with legal requirements designed to promote the independence of investment research, nor are they subject to any prohibition on dealing ahead of the dissemination of investment research.

J.P. Morgan Asset Management is the brand for the asset management business of JPMorgan Chase & Co. and its affiliates worldwide.

To the extent permitted by applicable law, we may record telephone calls and monitor electronic communications to comply with our legal and regulatory obligations and internal policies. Personal data will be collected, stored and processed by J.P. Morgan Asset Management in accordance with our Company's Privacy Policy. For further information regarding our regional privacy policies please refer to the EMEA Privacy Policy; for locational Asia Pacific privacy policies, please click on the respective links: Hong Kong Privacy Policy, Australia Privacy Policy, Taiwan Privacy Policy, Japan Privacy Policy and Singapore Privacy Policy.

This communication is issued by the following entities: in the United Kingdom by JPMorgan Asset Management (UK) Limited, which is authorized and regulated by the Financial Conduct Authority; in other European jurisdictions by JPMorgan Asset Management (Europe) S.à r.l.; in Hong Kong by JF Asset Management Limited, or JPMorgan Funds (Asia) Limited, or JPMorgan Asset Management Real Assets (Asia) Limited; in Singapore by JPMorgan Asset Management (Singapore) Limited (Co. Reg. No. 197601586K), or JPMorgan Asset Management Real Assets (Singapore) Pte Ltd (Co. Reg. No. 201120355E); in Taiwan by JPMorgan Asset Management (Taiwan) Limited; in Japan by JPMorgan Asset Management (Japan) Limited which is a member of the Investment Trusts Association, Japan, the Japan Investment Advisers Association, Type II Financial Instruments Firms Association and the Japan Securities Dealers Association and is regulated by the Financial Services Agency (registration number "Kanto Local Finance Bureau (Financial Instruments Firm) No. 330"); in Australia to wholesale clients only as defined in section 761A and 761G of the Corporations Act 2001 (Cth) by JPMorgan Asset Management (Australia) Limited (ABN 55143832080) (AFSL 376919); in Brazil by Banco J.P. Morgan S.A.; in Canada for institutional clients' use only by JPMorgan Asset Management (Canada) Inc., and in the United States by JPMorgan Distribution Services Inc. and J.P. Morgan Institutional Investments, Inc., both members of FINRA; and J.P. Morgan Investment Management Inc.

In APAC, distribution is for Hong Kong, Taiwan, Japan and Singapore. For all other countries in APAC, to intended recipients only.

Copyright 2018 JPMorgan Chase & Co. All rights reserved.

LV-JPM51230 | 10/18 | 0903c02a823f664a